

Vio LED MR16 Module System

Light & Building 2010



imagination at work

Vio MR16 Module System

Award winning GE LED technology in affordable MR16 reflector format



- Allows replacement of MR16 lamps and transformers in recessed downlight and spotlighting applications
- 3.6W version launching Q1 2010 with 7.2W version to follow
- 350mA driver and range of accessories also available
- Dimensions smaller than MR16 lamp – same diameter, shallower depth
- Unique selling features
 - Vio quality and stability of light – only available from GE
 - GE reliability and 50,000 hour L70 life
 - CRI approaching 90
 - 3 different colour temperatures available
 - Attractive ‘faceted reflector’ appearance similar to halogen
- Excellent photometric performance vs similar products on market



Vio High Power White LED
The look that lasts.™

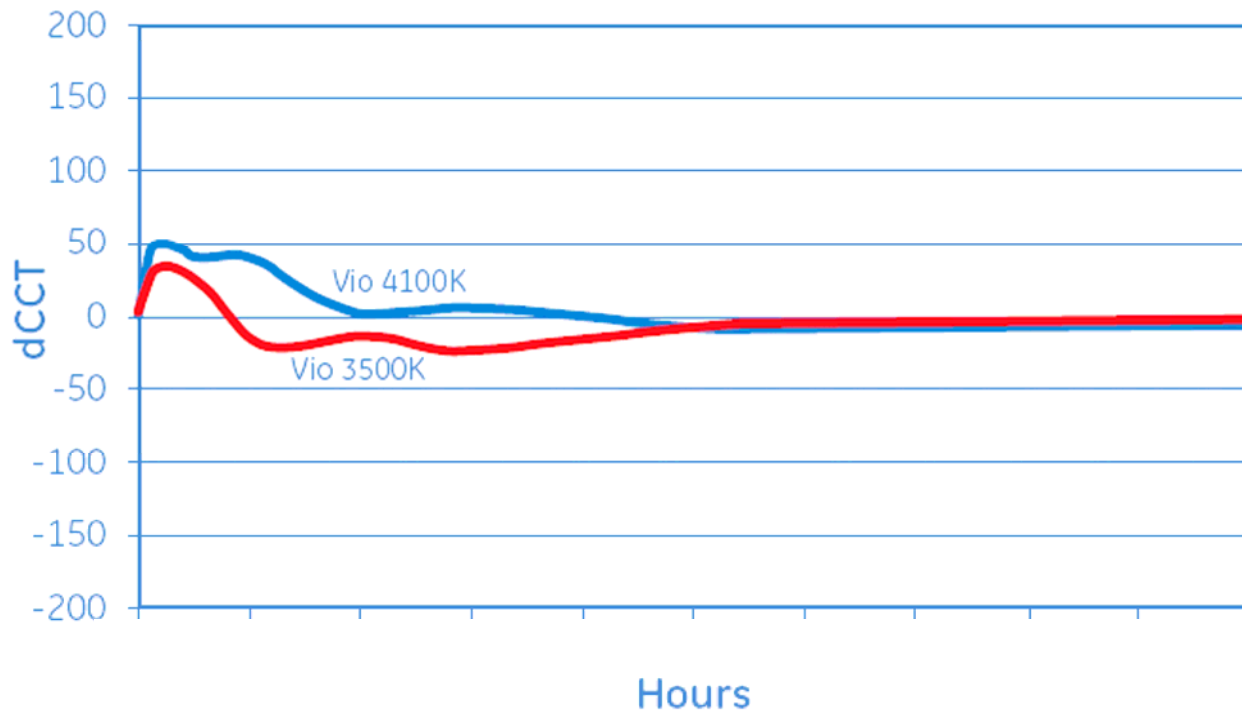


Vio LED Technology from GE

The ONLY LED technology with less than 75K colour shift through 50,000 hours



Color Stability Over Time



Details of range

| | |
|---|---|
|  | <p style="text-align: center;"><u>Module</u></p> <p>3.6W Vio with integrated reflector and heatsink 6 versions – 3 CCT and 2 levels of CRI Dimensions are smaller than MR16 LV lamp 7.2W version in development</p> |
|  | <p style="text-align: center;"><u>Driver</u></p> <p>350mA constant current, max wattage 10W Runs all Vio LED modules and also Vio emitters Can be sold as standalone unit to OEMs</p> |
|  | <p style="text-align: center;"><u>Cable</u></p> <p>Connects Vio module to driver</p> |
|  | <p style="text-align: center;"><u>Bezels</u></p> <p>Available in 2 finishes Others possible for large projects Enables conversion to 'completed downlight luminaire'</p> |
|  | <p style="text-align: center;"><u>Spring Kit</u></p> <p>Clips to module for recessed applications Enables conversion to 'completed downlight luminaire'</p> |

Concept vs. Philips MR16

GE Vio MR16 Module



Philips MasterLED MR16



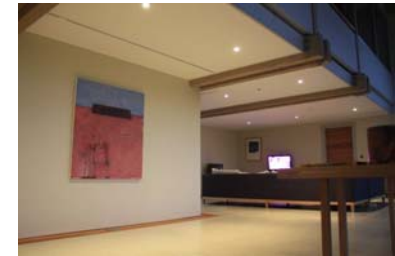
| | | |
|------------------|-------------------|-------------|
| Watts | 3.6 | 4 |
| System Watts | 4.3 | >6 |
| Beam angle | 32 | 24 |
| Life L70 | 50,000 | Not claimed |
| Life B50 | >50,000 | 45,000 |
| Lumens | 120-150 | 140 |
| CCT | 3000-4100 | 2700 |
| Colour stability | <75K | Not claimed |
| CRI | Up to 90 | 80 |
| Diameter | 50.7mm | 50.7mm |
| Depth | 40mm | 46mm |
| Compatibility | Dedicated driver | Uncertainty |
| Appearance | Faceted reflector | LED lens |

Applications – pilot projects

Hotel

Retail

Residential



Hotel pilots in UK/Ireland

SEPHORA
Dubai Mall
78 fittings in window

GRAND DESIGNS
UK Residence
Featured on UK TV

Cost of Ownership Example

Hotel Corridor project replacing 20W halogen

| | | Quantity | Lamp | Total Lamp Wattage | Annual Unit Burn Hours | Unit Lamp Life | Unit Lamp Cost | Annual Energy Cost | Relamp Total Cost | Annual Total Cost | Annual Total Savings (£) | Project Payback Period | Annual Saving (kwh) | Annual CO2 saved |
|--------|---|----------|----------|--------------------|------------------------|----------------|----------------|--------------------|-------------------|-------------------|--------------------------|------------------------|---------------------|------------------|
| Year 1 | A | 5000 | 20W MR16 | 22 | 8760 | 2000 | 2.00 | 96360 | 50000 | 146360 | | | | 0 |
| | B | 5000 | 3.6W VIO | 4.3 | 8760 | 50000 | 25.50 | 18834 | 127500 | 146334 | 26 | 26 | 775260 | 333 |
| Year 2 | A | 5000 | 20W MR16 | 22 | 8760 | 2000 | 2.00 | 96360 | 40000 | 136360 | | | | 0 |
| | B | 5000 | 3.6W VIO | 4.3 | 8760 | 50000 | 25.50 | 18834 | 0 | 18834 | 117526 | 117,552 | 775260 | 333 |
| Year 3 | A | 5000 | 20W MR16 | 22 | 8760 | 2000 | 2.00 | 96360 | 50000 | 146360 | | | | 0 |
| | B | 5000 | 3.6W VIO | 4.3 | 8760 | 50000 | 25.50 | 18834 | 0 | 18834 | 127526 | 245,078 | 775260 | 333 |
| Year 4 | A | 5000 | 20W MR16 | 22 | 8760 | 2000 | 2.00 | 96360 | 40000 | 136360 | | | | 0 |
| | B | 5000 | 3.6W VIO | 4.3 | 8760 | 50000 | 25.50 | 18834 | 0 | 18834 | 117526 | 362,604 | 775260 | 333 |
| Year 5 | A | 5000 | 20W MR16 | 22 | 8760 | 2000 | 2.00 | 96360 | 40000 | 136360 | | | | 0 |
| | B | 5000 | 3.6W VIO | 4.3 | 8760 | 50000 | 25.50 | 18834 | 0 | 18834 | 117526 | 480,130 | 775260 | 333 |

Payback in Year 1

Launch Timing Summary

Available Now

- 3.6W Module
- Accessories (bezels, springs, cables)
- 350mA non-dimming driver (Harvard sourced)

July 2010 launch window - planned

- 7.2W Module
- GE dimming driver
- Kits – in blister pack formats



WORLDWIDE PARTNER



GE imagination at work

www.gelighting.com/eu/led